



Visual Story: BIG BANG Festival at Roundhouse Community Arts & Recreation Centre

This visual story will help people prepare for attending the BIG BANG Festival.



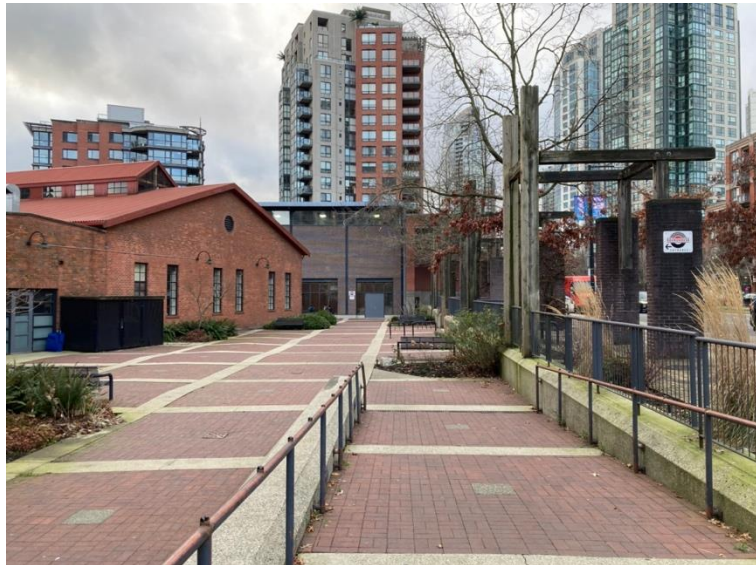
TABLE OF CONTENTS

You can click on any of the links to go straight to that page

- [Where is the Roundhouse Community Arts & Recreation Centre?](#)
- [Accessibility](#)
- [Getting to the Roundhouse](#)
- [Inside the Roundhouse](#)
 - [Lobby](#)
 - [The Great Hall](#)
 - [Chill Zone](#)
 - [Exhibition Hall](#)
 - [Washrooms](#)
- [Box Office and Ambassadors](#)
- [Staff & Volunteers](#)
- [BIG BANG Schedule](#)
 - [Welcome](#)
 - [Musical Journey](#)
 - [Qing Ensemble](#)
 - [The Carnival Band](#)
 - [Bounce House](#)
 - [Tone the Colours](#)
- [Drinks & Snacks](#)
- [Other Activities](#)
- [Sound at the BIG BANG Festival](#)
- [How people may react](#)
- [Questions?](#)

Where is the Roundhouse? 1/2

- The BIG BANG Festival will take place throughout the Roundhouse.
- The Roundhouse is located at 181 Roundhouse Mews, at the corner of Pacific Boulevard and Davie Street.
- Here are pictures of it from the corner of the street and the main doors.



Where is the Roundhouse? 2/2

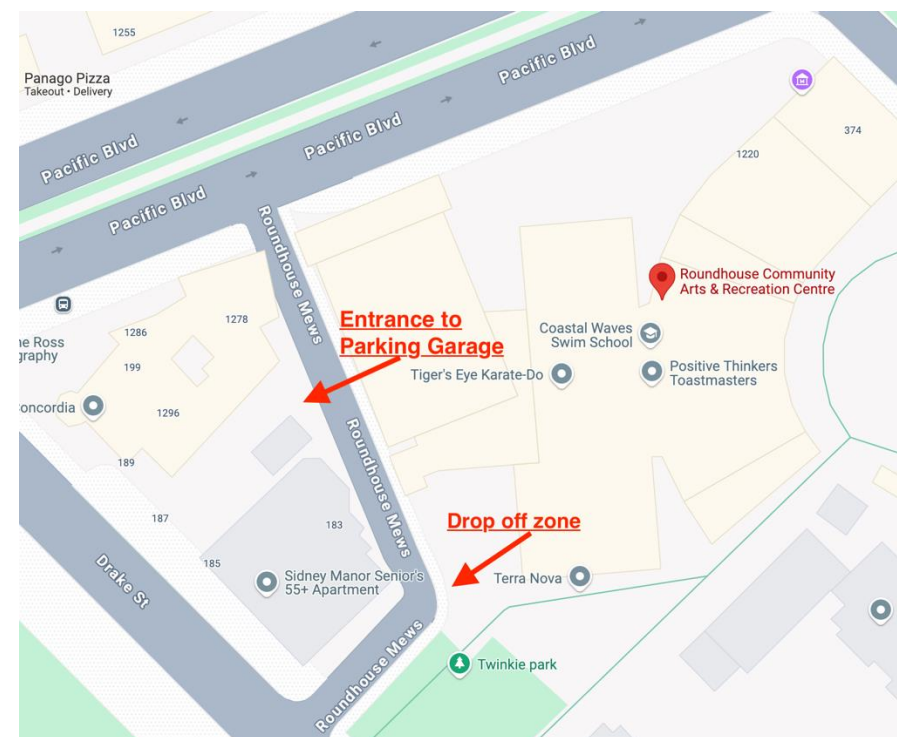
- An entrance to the building is also off Roundhouse Mews.
- Here is a picture of the entrance from off Drake Street.



Getting to the Roundhouse 1/3

Coming by Car

- Street parking is available on Pacific Boulevard, Davie Street and Drake Street with varying prices.
- The underground parking is accessed through Roundhouse Mews.
 - Pay parking is in effect
 - \$4/hour or \$17.50 for the day
- The best drop-off point is at the building entrance off Roundhouse Mews.



Getting to the Roundhouse 2/3

Coming by Skytrain

- The Roundhouse is located 200 metres from the Yaletown-Roundhouse Skytrain Station.



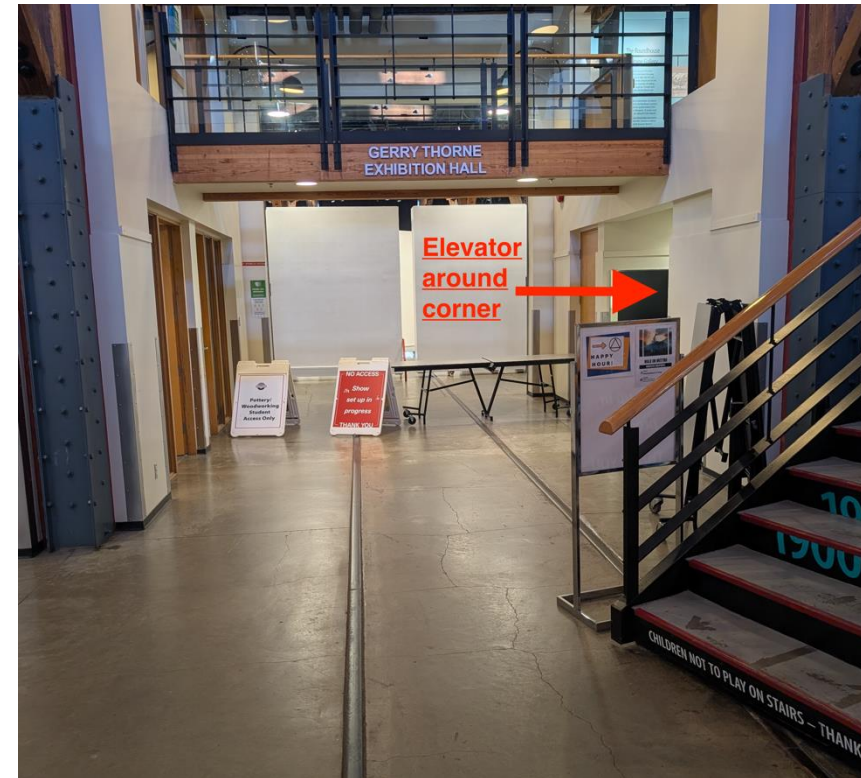
Getting to the Roundhouse 3/3

Coming by bus (see map on previous page)

- Route 6
 - Closest stop - Yaletown-Roundhouse Station Bay 2 is 180 metres from the Roundhouse.
- Route C23
 - Closest stop on the English Bay line – get off at Westbound Pacific Boulevard at Davie Street, right in front of Jugo Juice and cross Pacific Boulevard.
 - Closest stop on the Main St line – get off at Yaletown-Roundhouse Station Bay 4, right in front of RBC and cross Davie Street.

Accessibility 1/2

- The Roundhouse is located at street level or via a ramp at both entrances. [See photo on page 3.](#)
- Inside, there is an elevator located next to the stairs to the second floor.



Accessibility 2/2

- All the performances take place in accessible spaces, where audience can sit on the floor, on chairs, or remain standing.
- There is also an underground parking garage directly connected to the Roundhouse.
 - There is a set of stairs and an elevator to the parking.



Inside the Roundhouse

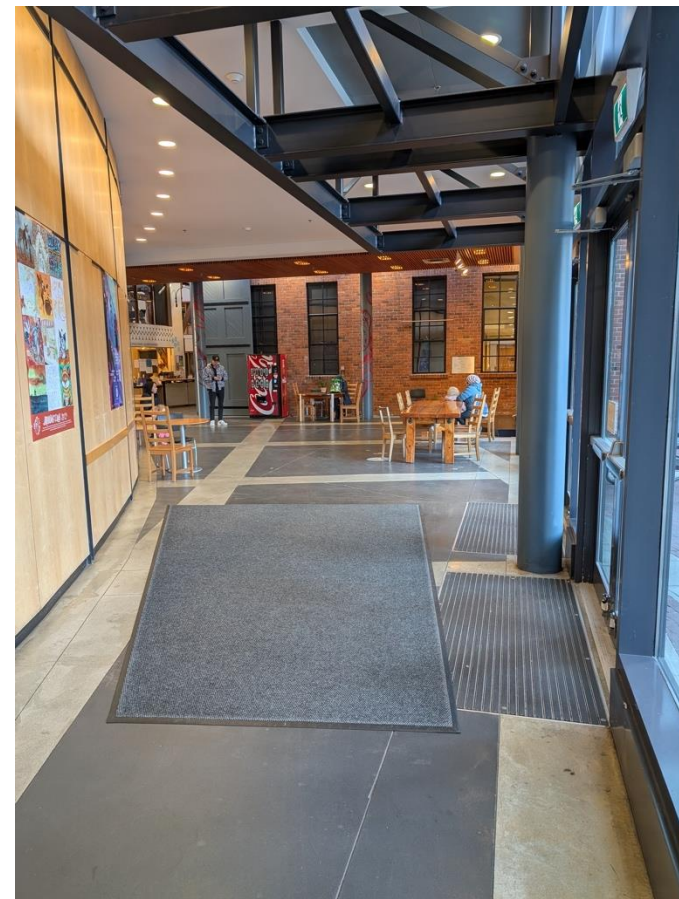
- The Roundhouse is an old train building that became a community centre in 1997. It is made up of three sections:
 - The original ten-bay building (now the Exhibition Hall and Performance Centre)
 - The Great Hall (where you can find the Dance Studio, Rooms, and washrooms)
 - The Lobby and Gymnasium

The Lobby 1/2

- These are pictures of the main Lobby.
- 1 shows the inside from Davie Street and Pacific Boulevard.
- 2 shows the inside from Roundhouse Mews.



1



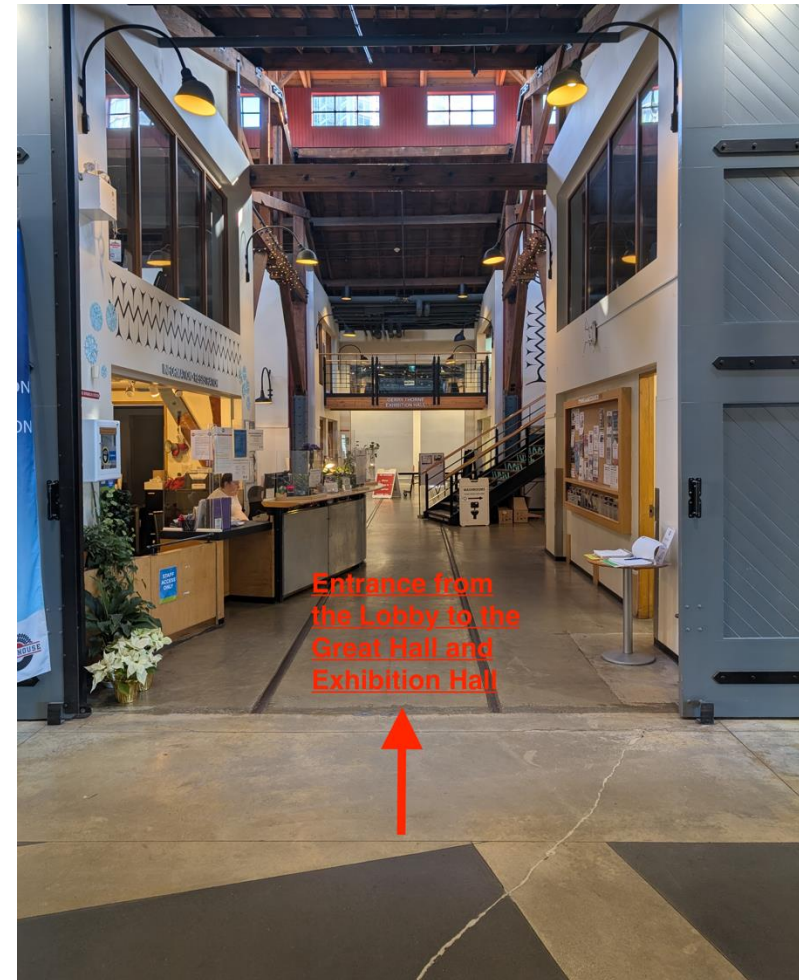
2

The Lobby 2/2

- With the entrances, it may be busy and loud in the lobby.
- There will be a Craft station on the long table.
- Also in the lobby will be the Box Office and the Ambassador Table.

Moving through the Roundhouse

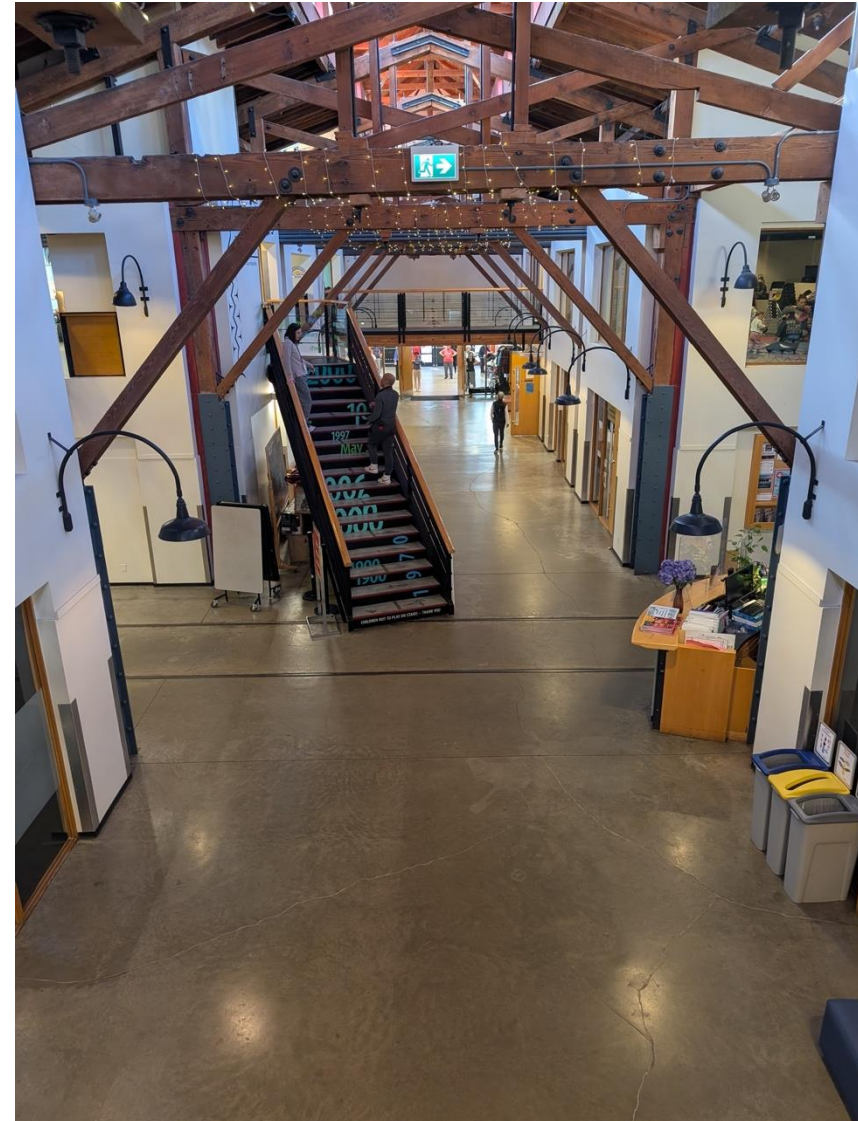
- From the Lobby, you can move towards other spaces in the building.
- The Great Hall has access to Room B for ‘Tone the Colours,’ the Chill Zone, plus washrooms and a water fountain.
- The Exhibition Hall is where the Performance Centre is located.



Entrance from
the Lobby to the
Great Hall and
Exhibition Hall

The Great Hall

- The Great Hall is the main hallway with access to Rooms.
- For BIG BANG, you can find 'Tone the Colours' in Room B, the Chill Zone in Room C, access to the stairs and elevator for the second level, and access to the washrooms.



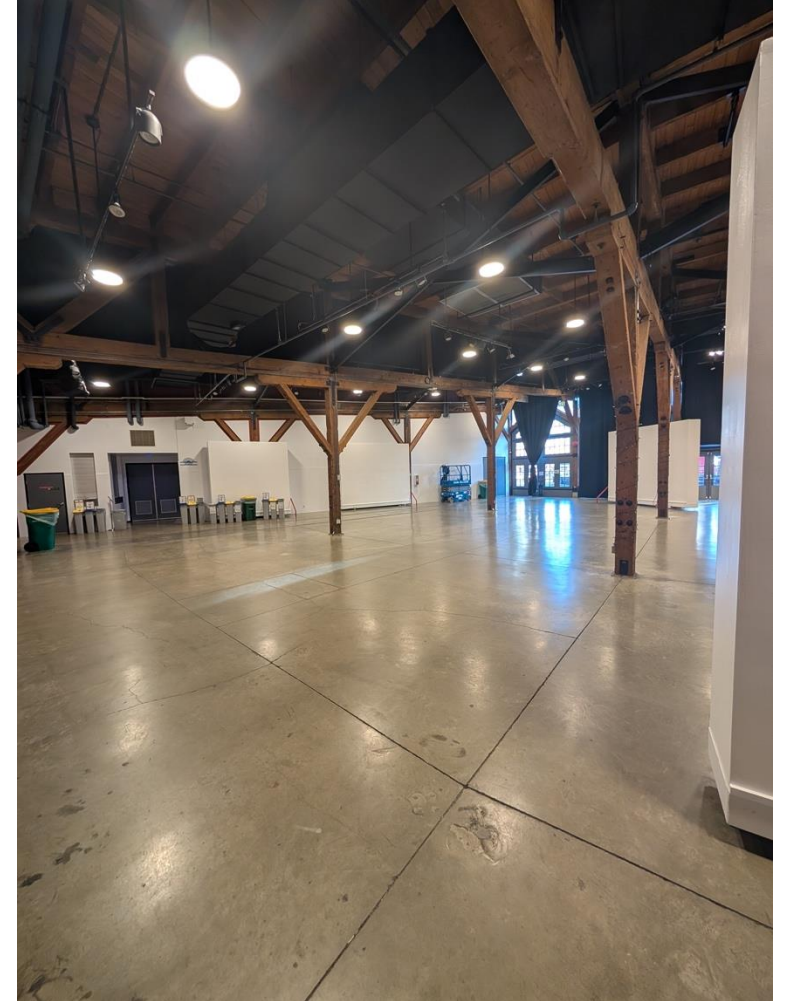
Chill Zone

- There is a Chill Zone in Room C.
- This is a low-sensory room quiet room. It will have:
 - Low lights
 - Cushions, yoga mats
 - Fidget toys and colouring pages
- You can spend as much time in here as you need.
- Please note – we will not have noise cancelling headphones, but you are welcome to bring your own.



Exhibition Hall 1/2

- The Exhibition Hall will be the busiest space for BIG BANG. There is lots to do like:
 - Watch the welcoming with Coastal Wolfpack
 - Get your face painted
 - Get a temporary BIG BANG Festival tattoo
 - Sit down and eat something
 - Listen and dance to The Carnival Band
 - Participate in The Musical Playground



Exhibition Hall 2/2

- From the Exhibition Hall, you can exit the building onto the turntable where there will be some food trucks. You can purchase something and then come back inside to eat.



Washrooms

- There is a set of washrooms near Room B.



Washrooms

- There is a set of washrooms accessible from the Great Hall and the Exhibition Hall.
- A change table can be found in the women's washroom.
- There is an accessible washroom located here.



Box Office

- The Box Office for the BIG BANG Festival will be in the Lobby.
- You can come here to purchase tickets or ask information.



Ambassador Table

- At the entrance from Pacific Boulevard, you will find the Ambassador Table.
- The Ambassadors are youth who know all about the Festival and can help you find what you are looking for.
- They will be wearing black t-shirts with the red BIG BANG logo on them.



Staff & Volunteers

- Our staff and volunteers will all be wearing the BIG BANG t-shirt.

If you need help, ask them and they will be able to direct you.



BIG BANG Schedule

- The current schedule for BIG BANG 2025 can be found on the Music on Main website at <https://www.musiconmain.ca/big-bang-festival-2025-schedule/>

Welcome with Coastal Wolfpack

- To open the BIG BANG Festival at 12:00pm, Tsatsu Stalqayu, also known as the Coastal Wolfpack will perform and welcome everyone.
- This will take place in the Exhibition Hall and will last around 15 minutes.

Saina's Music Room

- If you choose to see Saina's Music Room, get your tickets ready and head to Meeting Point A in the Great Hall.
 - Our volunteer will scan your ticket and invite you to join the group.
- Saina will welcome you into her room. The room will have some pretty lights making the space feel warm and inviting.
 - You will sit on cushions on the floor, or on chairs behind those if you choose.



Qing Ensemble

- If you choose to see just the Qing Ensemble, get your tickets ready and head to the entrance to the Performance Centre in the Exhibition Hall.
 - Our volunteer will scan your ticket and invite you to enter the room.
 - You will sit on mats on the floor, or on chairs behind those if you choose.



The Carnival Band

- Throughout the day, The Carnival Band will perform while marching through the building. There will be about 15 musicians moving around trying to start up a party.
- You are invited to join in!



Bounce House

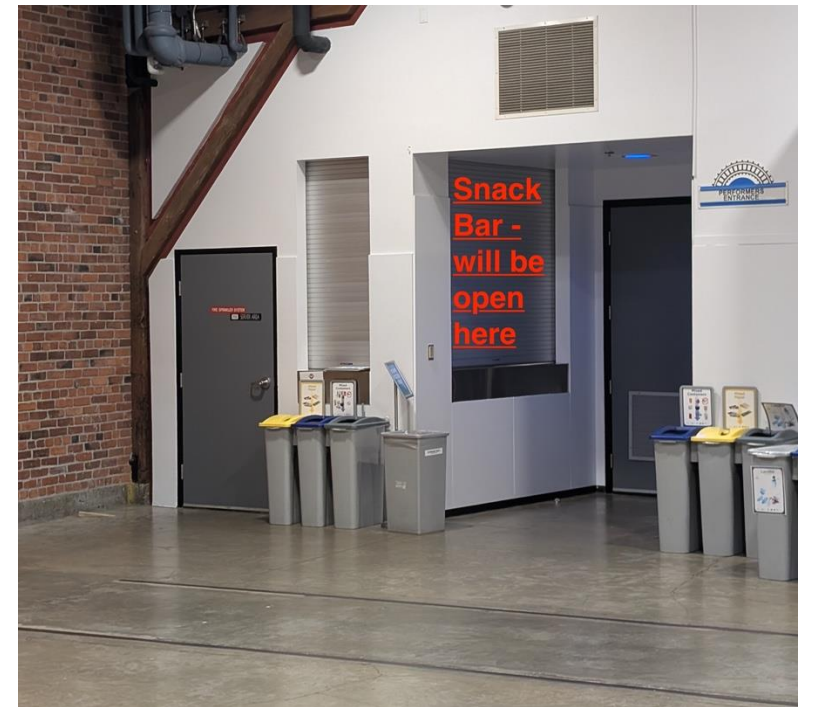
- Come to the Gymnasium for a free activity called 'Bounce House'.
- This room will be loud – it features two drummers.
- In this room, you will have to remove your shoes and wait in line for your turn.
- When it is your turn, you will get to bounce in the bouncy castle while the drummers improvise to the movements you are making and the bounces you take.
- When your turn is over, you will be asked to exit the bouncy castle but you can always remain in the room to listen.

Tone the Colours

- Come to Room B for a free activity called 'Tone the Colours'.
- This room will be very quiet – you will be given a pair of headphones to listen to sounds and instructions of what to do.
- When you are given the headphones, the Guide will make sure that you can hear what is playing, and then you will get to move around the space.
- Listen, move and dance along!
- When the recording has finished, please return the headphones to the Guide.

Drinks and Snacks

- There is a Snack Bar located in the corner of the Exhibition Hall.
- Some refreshments and snacks will be sold here, where you can pay card or cash.
- There is a water fountain located in the Great Hall.
- If you're hungry, there will be Food Trucks located on the turntable outside the doors of the Exhibition Hall.



Other Activities:

Face paint and Temporary Tattoos

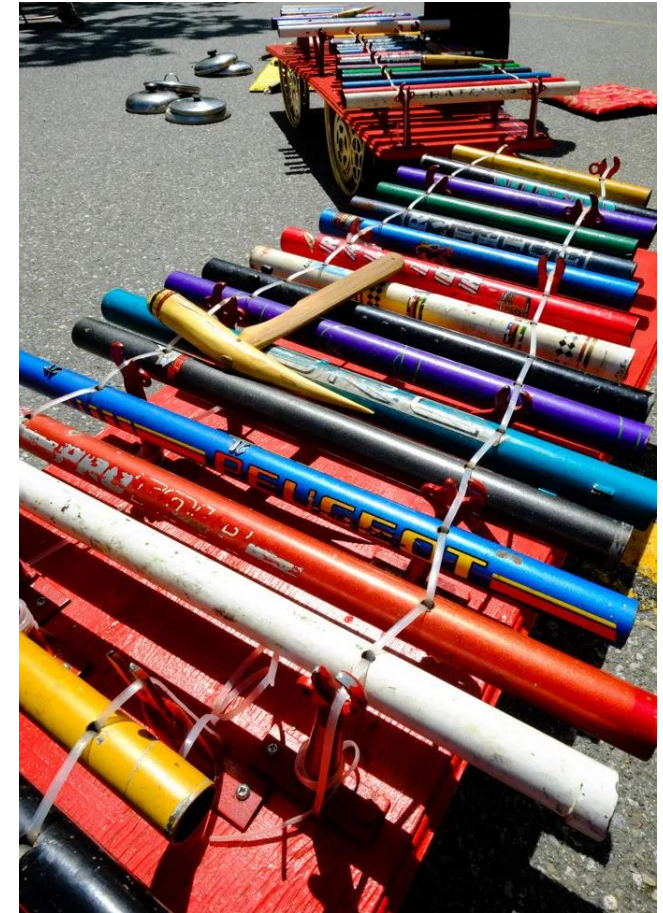
- In the Exhibition Hall, we will have a station where you can get a design painted on your face!
- We will also have a station where you can get a temporary BIG BANG tattoo!



Other Activities:

The Musical Playground by Publik Secrets

- Behind the stage you will find The Musical Playground, an interactive installation.
- In this, you will get to create graphic scores and watch a musician perform them for you with their unique sonic instruments.



Sound at the BIG BANG Festival

- There will be a lot of sound and noise in the Roundhouse for the BIG BANG.
 - There will be music from performances – some loud, some very quiet.
 - There will be noise from other people – the rooms have an echo, especially the Exhibition Hall.
- The most intense moments of sound will be while The Carnival Band is performing at 12:20-12:30pm, 1:45-2:00pm, 3:15-3:30pm, and 4:45-5:00pm.
- We will have ear plugs. We will not have noise cancelling headphones, but you are welcome to bring your own.

How people may react at the BIG BANG

- When in the Roundhouse, we think people will react differently to all the activities available.
- In the Music Rooms, the audience is generally quiet.
 - There will be some funny moments. Sometimes people laugh, sometimes no one does.
 - There will be some moments where people are invited to make noise. Sometimes people do, sometimes no one does.
- We invite you to respond however feels right for you.

Questions?

Reach out to us at Music on Main or the Roundhouse.

Music on Main

Phone: 604-879-9888

Email: info@musiconmain.ca

Website: www.musiconmain.ca

The Roundhouse Community Arts and Recreation Centre

Phone: 604-713-1800

Email: info@roundhouse.ca

Website: www.roundhouse.ca

This Visual Story was created with templates from several arts organizations, with thanks going to Vancouver Writers Fest, PuSh Festival and International Children's Festival.